

gS Series Glass Bridge Multifunction Displays



INNOVATION • QUALITY • TRUST

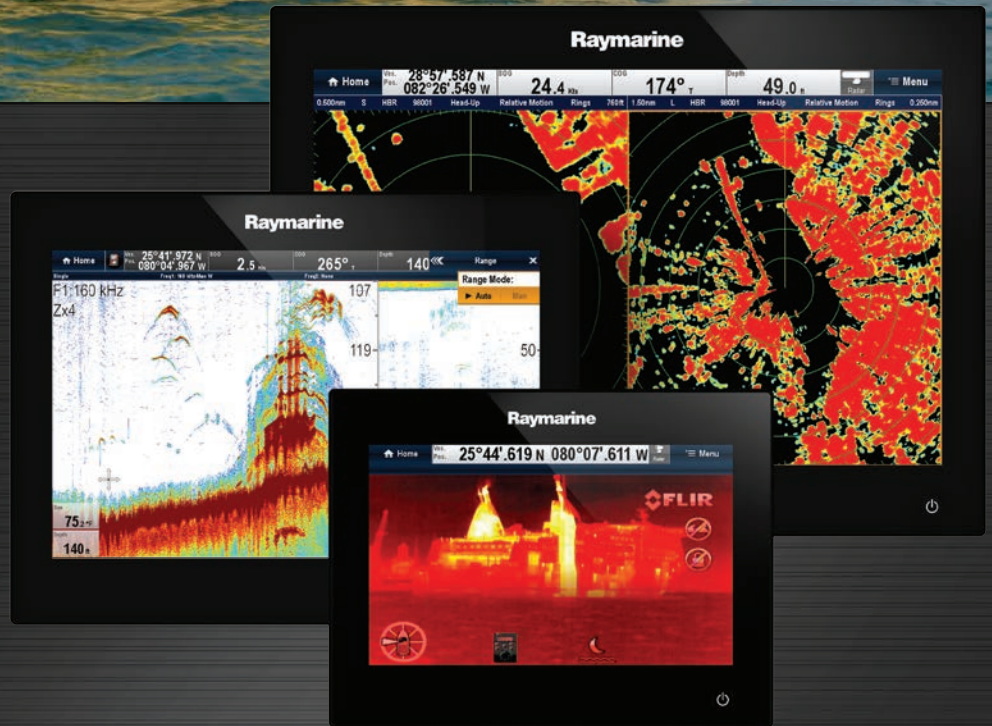
Raymarine®

gS Series

Welcome to Glass Bridge, Raymarine's premier network navigation system

Elegant, flexible, and simple to use, **gS Series** multifunction displays will transform your helm station into a powerful glass bridge navigation system. Each gS Series display is a fully self-contained multifunction navigation display equipped with a new fast dual core processor plus a third dedicated graphics processor, delivering super fast and responsive performance.

gS Series meets the needs of demanding skippers looking for integrated navigation with unprecedented flexibility. Create a single display touch-screen navigation system or expand **gS Series** into a multi-station system with remote keyboard control, the choice is yours. This system can also be linked directly to Raymarine's latest MFD range.



Sonar

Radar

Chart

Digital Switching

Engines

Audio Control

Data

Glass Bridge Multifunction Displays

NEW
PRODUCT
Preview



Enjoy full touch screen interaction with multi-touch control, including pinch to zoom chart controls.



Simple Operation & Total Control

Navigating with **gS Series** is incredibly simple with the smooth and responsive Multi-Touch control of Raymarine's LightHouse User Interface. Enjoy fluid and effortless full touch-screen interaction with Raymarine's easy to use LightHouse user interface or interact with any **gS Series** display from the optional remote keypad. The optional remote keypad gives you total control of a single or multiple **gS Series** displays, putting you in total command of the **gS Series** network.



Network the remote keypad to multiple displays

gS Series



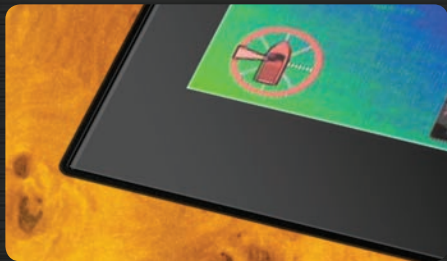
9"

gS95

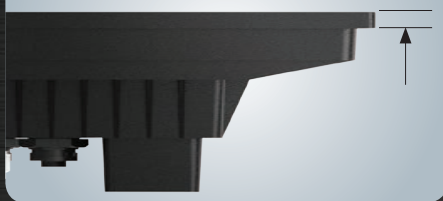


gS Series... A Perfect Fit!

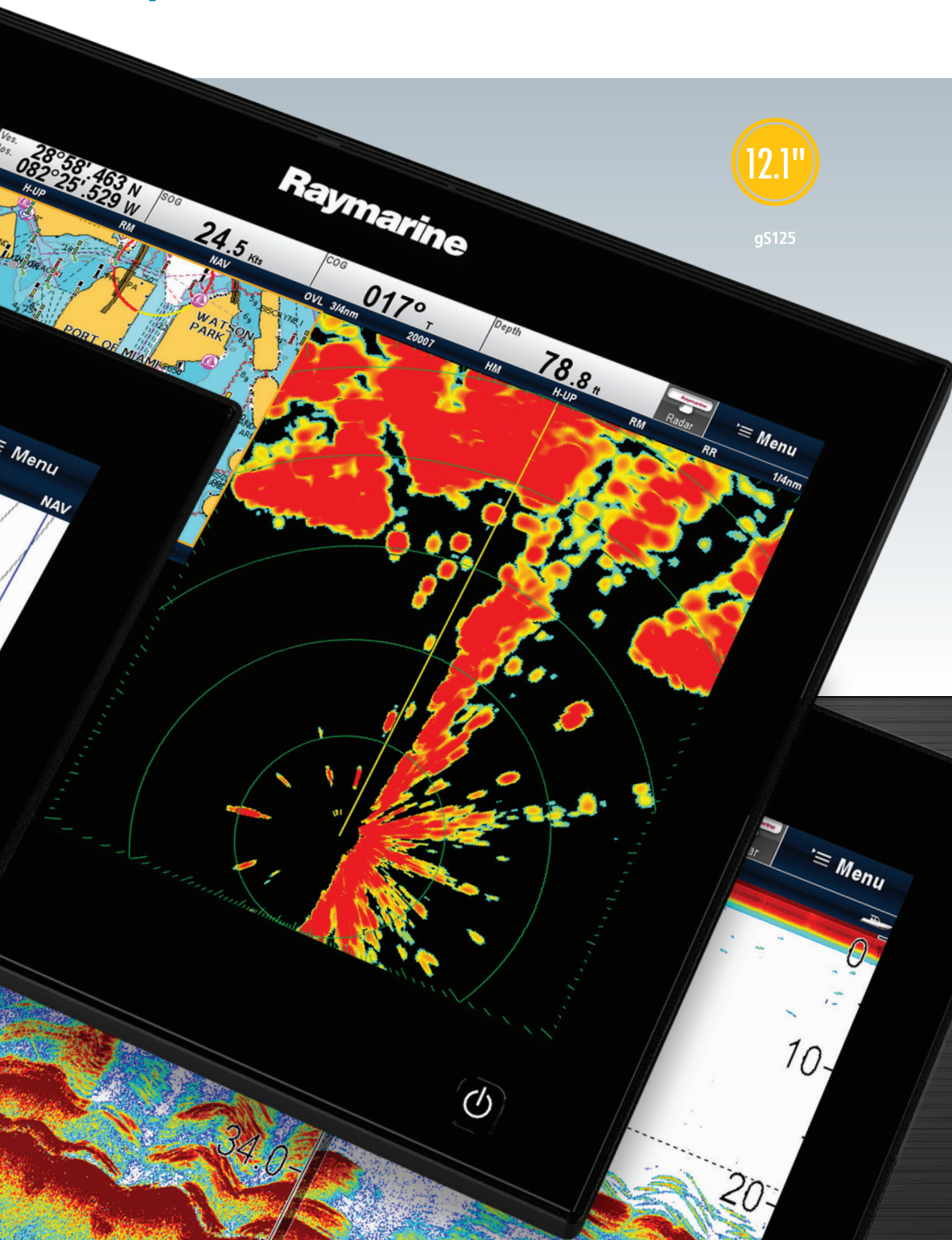
The edge-to-edge glass construction of **gS Series** enables the displays to be completely flush-mounted in the helm panel for an attractive and integrated navigation experience.



Slimline bezel
0.3in (8mm)



Simple Fluid Touch Screen Interaction



12.1"

gS125



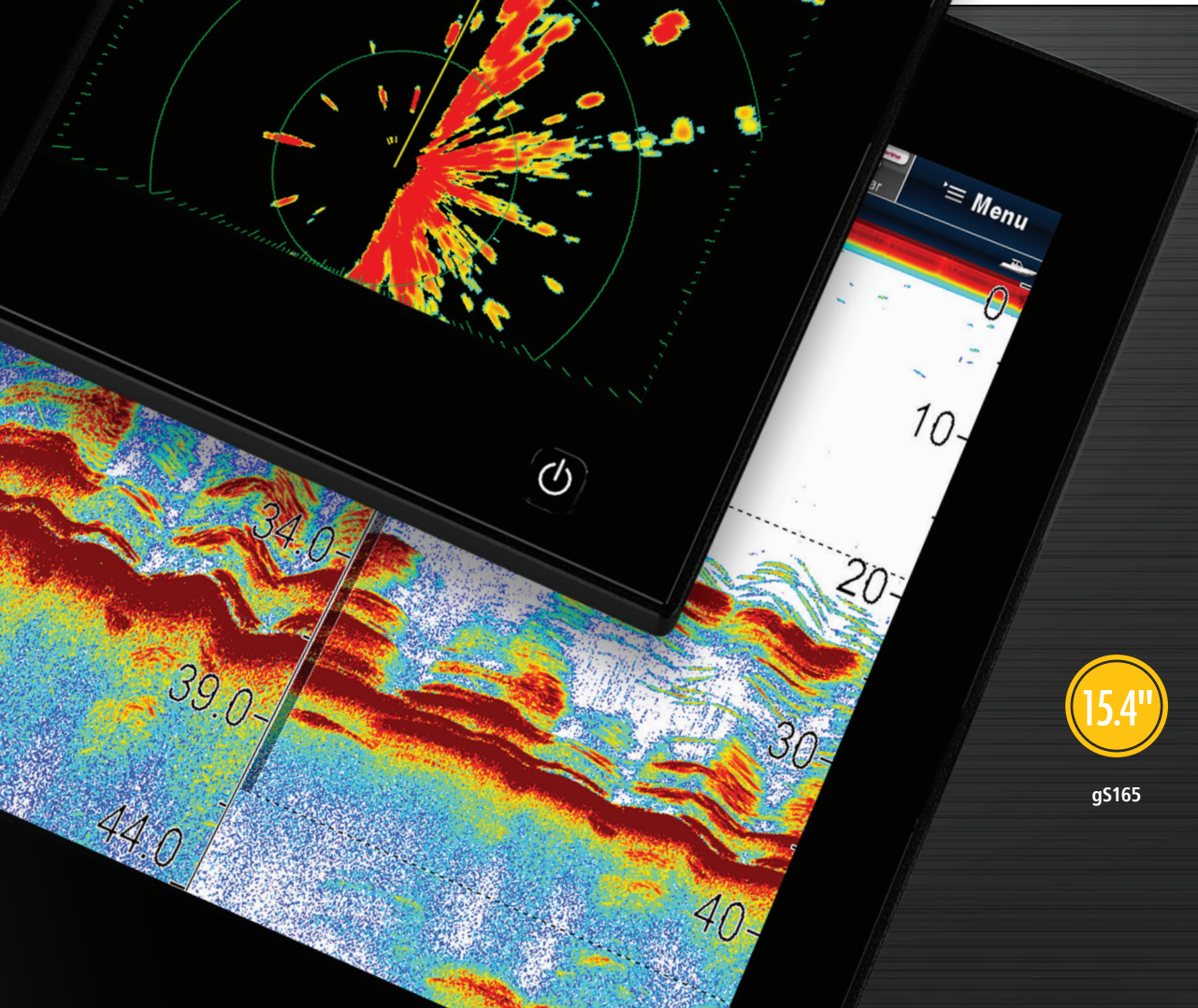
Thermal Camera



Chart



Radar



15.4"

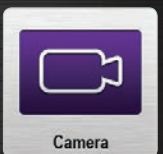
gS165



clear pulse



Fishfinder



Camera



Weather



FUSION-Link



Powerful Navigation Network

Thermal Night Vision

Make navigating at night easier with **gS Series** and T-Series thermal night vision cameras. Slow-to-Cue target tracking keeps the camera locked on dangerous targets for added safety

GPS Chartplotter

The **gS Series** powerful chart engine supports Navionics Platinum Plus charts offering stunning 3D chart images and aerial photo chart overlays

Radar

Stay aware with Raymarine's Super HD Color radar sensors. Super HD Color offers 256 color target separation, plus Raymarine's exclusive automatic Bird Mode for targeting flocks of seabirds above fishing grounds



gS Series display with keypad in landscape orientation

ClearPulse® CHIRP Sonar

Increase your underwater intelligence with **gS Series** and the ClearPulse® CHIRP powered CP450C sonar module. Target bait and predators with unmatched clarity down to 10,000 ft (3000m)

Video

Each **gS Series** display features 2 analog video inputs for thermal or CCTV cameras. Plus **gS Series** supports unlimited IP network cameras. **gS Series** gigabit Raynet ports provide Power Over Ethernet (POE) for fast and reliable video-over-IP performance.

SIRIUSXM Weather and Satellite Radio*

Stay ahead of the front with SIRIUSXM weather delivered right to your **gS Series** display. Monitor weather radar and keep tabs on the latest conditions with up to the minute weather data. Also enjoy and control SIRIUSXM satellite radio direct from the **gS Series** display.

FUSION Integration

gS Series is ready to rock with integration to Fusion 700 series marine audio systems. The FUSIONLink audio app lets you control audio zones, play tracks and view album information direct from the **gS Series** display. Add the RayRemote mobile app and you have full wireless control of your on-board audio system.

Sport Optic Friendly LCD

gS Series displays are engineered with unique LCD technology that eliminates the "black out effect" caused by polarized sport sunglasses.



Glass Bridge Connectivity

- 3 Raynet waterproof network ports with POE (Power Over Ethernet)
- Video support for video-over-IP cameras
- NMEA2000 Networking via Raymarine's SeaTalk^{ng} cabling system
- HDMI output for remote monitors or LCD TV connection
- 2 composite video input ports (BNC)
- WiFi and Bluetooth support
- External alarm connection

*SIRIUSXM receiver and subscription required

Total System Control

NEW
PRODUCT
Preview



Switch Panel

Digital Switching

Digital Switching integrates control of the vessel's electrical systems into the **gS Series** touch-screen interface. Control lighting, monitor electrical systems, and much more.



Turn to the back cover for more information

Mobile Apps

Access Raymarine anywhere onboard via Raymarine mobile apps and **gS Series** built-in Wi-Fi. Enjoy full control of your **gS Series** direct from your tablet or smart phone using Raymarine's RayControl or RayRemote mobile apps.



Waterproof HDMI Output

Each **gS Series** display features HDMI output for connection to LCD TVs and monitors. The **gS Series** remote keyboard or Raymarine wireless apps give you full control of **gS Series** from any onboard HDTV, monitor or display.



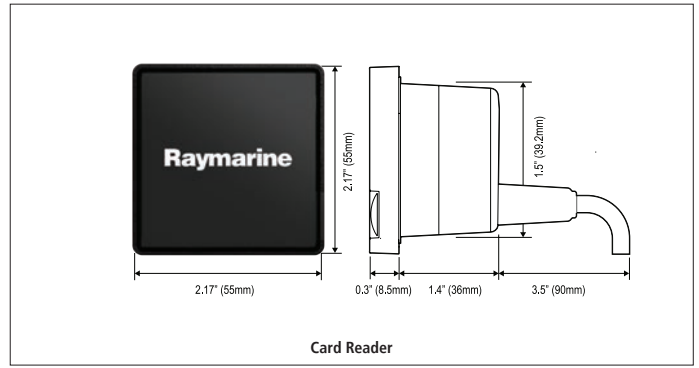
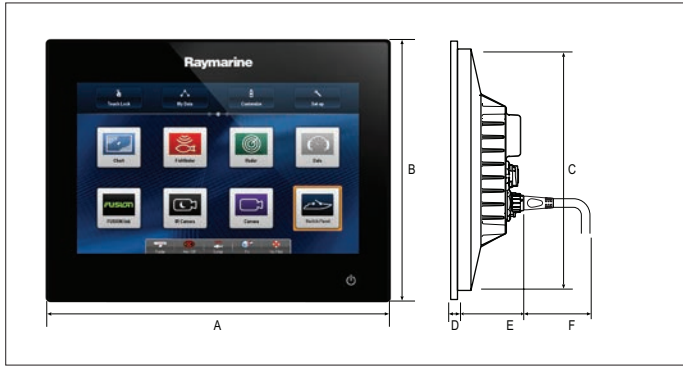
Keypad

The optional remote keypad gives you full control of single or multiple **gS Series** displays from a remote location. The keypad can be used in portrait or landscape orientation and is fully waterproof to IPX6 and IPX7 standards.

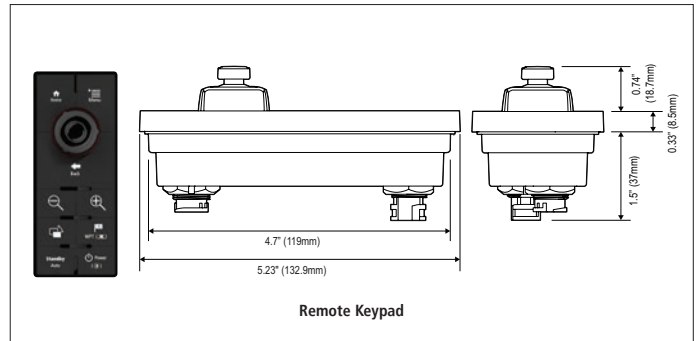
microSD Card Reader

Each **gS Series** display is supplied with a fully-waterproof remote dual microSD memory card reader for Navionics charts, software updates and data back up. Cartography can be shared across networked displays from a single card reader.





	gS95		gS125		gS165	
A	9.7in	246.8 mm	12.3 in	311.8 mm	15in	383.2 mm
B	7.4in	188.2 mm	9.3in	237 mm	11.2 in	284.7 mm
C	6.7in	170.8 mm	8.7in	219.8 mm	10.5 in	267.4 mm
D	0.3 in	8 mm	0.3 in	8 mm	0.3 in	8 mm
E	2.9in	72.7 mm	2.9in	72.9 mm	2.9 in	72.3 mm
F	3.5 in	90 mm	3.5 in	90 mm	3.5 in	90 mm



3

FREE WARRANTY UPGRADE FROM 2 YEARS TO 3 YEARS

Raymarine offers a 2 year Limited Warranty (upgradable to 3 years upon product registration) on products installed in vessel use classifications within this brochure, full details of the Global Warranty Policy and how to register your products can be found at www.raymarine.com/warranty. If you require local assistance, please contact a Raymarine certified dealer near you, details of which can be found at www.raymarine.com/dealerlocator.

Safety Notice
Raymarine products are intended to be used as aids to navigation and must never be used in preference to sound navigational judgement. Their accuracy can be affected by many factors, including environmental conditions, equipment failure or defects, and incorrect installation, handling or use. Only official government charts and notices to mariners contain all the current information needed for safe navigation, and the captain is responsible for their prudent use. It is the user's responsibility to use official government charts, notices to mariners, caution and proper navigational skill when operating any Raymarine product.

Content Note
The technical and graphical information contained in this brochure, to the best of our knowledge, was correct as it went to press. However, the Raymarine policy of continuous improvement and updating may change product specifications without prior notice. Therefore, unavoidable differences between the product and this brochure may occur from time to time, for which liability cannot be accepted by Raymarine.

Specifications
All specifications are subject to change without prior notice. Visit www.raymarine.com for the most up-to-date specifications. Some images are for illustration purposes only.

Trademarks
For a list of trademarks, please refer to our website www.raymarine.com

Photography.
The lifestyle photography used in this brochure is supplied courtesy of: Billy Black and Azimut

Note: Equipment described herein may require US Government authorisation for export purposes. Diversion contrary to US law is prohibited.

Raymarine UK Limited T: +44 (0)1329 246 700	Raymarine Asia Pty Ltd T: (+61) (0)2 9479 4800	Raymarine Inc. T: (+1) 603.324.7900
Raymarine France T: (+33) (0) 146497230	Raymarine Finland Oy T: (+358) (0) 207619937	Raymarine Italy T: (+39) (0)2 5695906
Raymarine Belgium T: (+32) 765 79 41 74	Raymarine Denmark T: (+45) 4371 6464	Raymarine Germany GmbH T: (+49) (0) 40 237 8080
Raymarine Nederland T: (+31) (0) 26 361 4242	Raymarine Norway T: (+47) 69 264 600	Raymarine Sweden AB T: (+46) 317 633670

Finding a Dealer: Raymarine has an extensive Worldwide network of dealers. To find a dealer near you, go to www.raymarine.com/locatedealer



Connect with a gS Series Consultant ...

gS Series systems are available through Raymarine's network of certified gS Series dealers. Your Raymarine gS Series dealer can help create and customize a gS Series system that is right for you. To learn more visit Raymarine.com/gs-series



www.raymarine.com

Raymarine®
A FLIR COMPANY